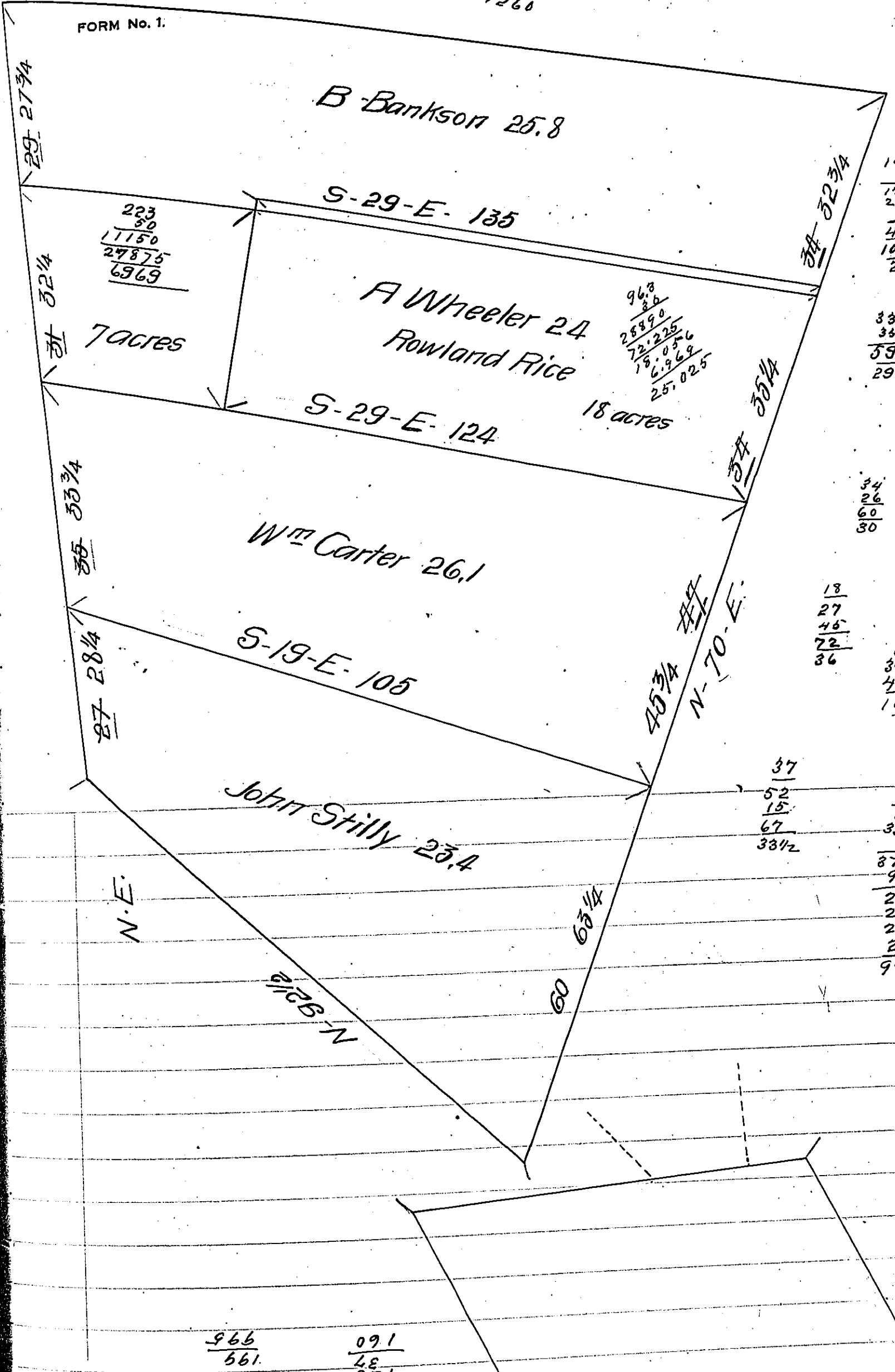


FORM No. 1.

140
146
1260



223
50
17150
27875
6969

96.8
28890
72.225
18.0556
6.969
25.025

140
29 1/2
1260
280
70
4130
10325
25.8

33 1/2
35 1/2
59
29 1/2
140
56 1/2
420
480
1207

34
26
60
30
128
3440
3960
24.

18
27
46
72
36
116
36
696
348
417.6
104.4
26.1

37
52
15
67
33 1/2
112
33 1/2
336
336
56
8752
938
2314
26.1
24.0
25.8
99.3

566
561
091
48
21

IN TESTIMONY that the above is a copy of the original remaining on file in the Department of Internal Affairs of Pennsylvania, made conformably to an Act of Assembly approved the 16th day of February, 1833, I have hereunto set my Hand and caused the Seal of said Department to be affixed at Harrisburg, this ninth day of November 1909.

Henry Howell
Secretary of Internal Affairs.

bers St.
26

two
5